



WAVE INTEGRATED BUSINESS LLC

Sultanate of Oman

THE WAY TO EXCELLENCE

United Arab Emirates

Muscat

An ISO certified company.

UAE

CrNo:1361131|pc130|Tax card no: 8898572|VATIN:OM1100068567

LOCATION

1ST FLOOR, OFFICE NO: 102,

ALFARDAN GHALA, MUSCAT

+968 24501399, +968 24524728

info@waveintegrated.com

civil@waveintegrated.com

DUBAI

UNITED ARAB EMIRATES

+971 543991414

info.uae@waveintegrated.com

sales.uae@waveintegrated.com



VISION

To become the leading construction firm, while delivering projects that consistently exceed international standards and provide exceptional customer satisfaction. To continually deliver excellent value & innovative construction solutions to meet our clients' requirements. Using modern principles and sophisticated technologies, Wave Integrated Business LLC envisions being the primary preference at all times both nationally and globally, for their renowned excellence, quality, performance and reliability in all types of constructions.

MISSION

To become the customers' most preferred choice by attaining excellence in quality and timely completed value-added projects. To provide the highest level of service in the construction industry while offering superior craftsmanship to every project, we handle.



INTRODUCTION

WAVE INTEGRATED BUSINESS LLC Commenced business operations in the Sultanate of Oman. WAVE INTEGRATED BUSINESS LLC, as we are popularly known in the Sultanate of Oman has raisin from humble beginnings as a contracting like civil, MEP, power and Telecom, trading of special items, Maintenances works both civil, MEP, Finishing and special activities like industrial floor coating and waterproofing works in Oman.

Now maintenance works of CIVIL, AND MEP, power and telecom and Finishing activities like all types of industrial floor coating, all type of the waterproofing works, concrete strengthening has been the company's strategic business base. The business experience of Wave Integrated Business LLC spans nearly five years. We have set up operations in different parts of Gulf.

As a good player in the above – said activities, Wave integrated business LLC team has been marking practical contribution to various prestigious projects in the Sultanate of Oman, using the special talents to build a company known for its reliability, quality and customer service.

Wave Integrated Business LLC reputation in the region and proven track records of excellent growth management continue to fuel its growing success in the market. The Wave Integrated Group is at the forefront of the adoption of new technologies and contemporary management method to improve efficiency and ensure quality service. The group companies have all adopted quality management systems and all operations in Muscat.

The Company has a professional management team headed by its Group Chairman Mr. Badar Suweliem Ali Al Kasbi and managing Director Mr.Sajayan V.D. They are having a rich background in business. Their strong business acumen and dynamic management style have been the strength on which the company has been able to achieve tremendous growth. They had the vision to make the company a global player.

They management team consist of professional business and divisional operating heads, which are professionally qualifies with several years of experience in their area of specification. The personnel under the respective divisional heads area also well trained and qualified. The management philosophy of the company is to encourage independent decision -marking by the operational and divisional heads to groom them as successful managers. The collective process decision – marking is also resorted to when a consensus is required on crucial business decisions.

Have been in the business since started has a well- established infrastructure for the execution of operations.



MANPOWER



The company has on its role, a large number of tradesmen who are highly skilled in various functions. Motivation being an integral part of the quality control process, the company has incentive schemes for skilled tradesmen who excel in their performance.

WIDE CUSTOMER BASE



Wave Integrated Business LLC has been working with Government, Semi Government as well as private agencies and has a very wide customer base in the market.

TRAINING & DEVELOPMENT



We have laid great emphasis on conducting in-house and on job training for all our personnel. An induction and orientation program for new recruits on the company's policies, procedures, quality systems are given to the employees before being inducted into the service so that the quality of work does not fall below the prescribed standard.

QUALITY SERVICES



- The maintenance of quality has been an important strength for the growth of Wave Integrated Business LLC.
- Consideration towards health, safety & environment has also been an important initiative in Wave Integrated.
- We always provide a best quality of works in each stage at construction, maintenance and special activities.
- The company adopts the best practices in the industry to implement the above.

QUALITY ASSURANCE & CONTROL



We have given great emphasis to ensure that only excellent quality materials are used in the works. We have a system of quality assurance of using only the correct material specified which in turn is further verified by regular site visits, testing procedures and regular follow ups so that the client gets the best value for his money.

DATA BASE



We have vast experience in a variety of construction jobs and Maintenance of Civil and MEP works over a period of time, we have established a wide database of the product ranges and latest techniques, which is accessible to our engineers/ supervisors.

INVENTORY & LOGISTIC CONTROL



The company has a central procurement system with well-established procedures to manage the stores, procurement and inventory control at the sites. The efficient functioning of the procurement, logistic and support services largely contribute to the timely completion of the projects using the quality materials as specified and approved by client/consultants.

QUALITY SURVEY



Wave Integrated business LLC has a Quantity Surveying section with sufficient quantification engineers, which attends to pre-tender analysis of projects tendering and post-tender monitoring of all projects, which eventually come up for execution.

HEALTH, SAFETY & ENVIRONMENT (HSE)

HSE aspect is one of the prime operational set up of our organization not only the importance of health and safety but also the importance nature and environment. All employees are very well aware about the essential features of HSE requirements and make sure it strictly adheres at our all-working site and watch is kept at various levels to ensure that instructions are enforced rigidly in this regard. Management closely monitoring the HSE and insists on good housekeeping and special awards are given periodically to encourage personnel in maintaining the standards.

QUALITY POLICY

We are committed to continuously improve our Processes, Products and Services, to deliver sustainable Business to the Delight of our valued client, through innovation, enhanced HR Motivation & Competence, with due regard to the nature.

- **Better market price:** We always try to provide the better market price to the valued customer through our innovative product analysis and market conditions.
- **Better quality:** We always try to provide the better quality to our valued customers. For that we are strictly following manufactures guidelines and instructions and strictly adhere to use the calibrated equipment for better quality inspection.
- **Completion on time:** We are strictly adhering to complete the project on time. For that our super-visors and engineers strictly following the project schedule.
- **Customer satisfaction:** Commitment to deliver products and services requirements as per customer expectations. Make sure 100 % customer care after execution, for that record all customer complaints on receive. The same attend on time and clear the points immediately.



HSE POLICY

- Company policy is that at the operations and executions at all times in such a way as to ensure Health, safety and welfare of all the direct employees and indirect all persons with its operations, including all clients, Consultants, Sub-contractors and General Public. The Company is also very much committed to follow the general environmental policies and environment conservation.
- The company shall very much specific about the safety and always maintains high safety Standards through safety training, encouraging interest and enthusiasm in safety and by developing personal responsibilities for safety.
- The company accepts the safety matters are held in equal importance to other business Objectives.
- The company shall set up its operations itself to minimize any deterrent to the environment and disposal of waste shall be controlled.
- The company shall ensure the protection and safe operation of all the plant and equipment.
- The company shall comply with all Laws and Statues of the Sultanate of Oman.



KEY PERSONNEL



MR. BADAR SUWEILEM ALI AL KASBI. - GROUP CHAIRMAN

Mr. Badar Suweilem Ali Al Kasbi. is the chairman of the group. This group started with his support, blessings, and his visionary leadership. “The journey will begin with a single step to the way of present excellence set up”. His great support helped the overall growth of M/s. Wave Integrated Business L.L.C Group, which started as a small-scale trading division, today has grown manifold in terms of diverse synergic businesses and volume of operations across the Sultanate of Oman. Today, M/s. Wave Integrated Business L.L.C is one of the well-known establishments in the Oman market in terms of Civil Construction, mechanical, Electrical and plumbing (MEP), Power and Telecom, and Trading divisions. As the Chairman, Mr. Bader Suweilem Ali Kasbi provides the support, motivation and direction, which propel Wave Integrated business llc growth and move forward.



MR. SAJAYAN. V.D. – MANAGING DIRECTOR

Mr. Sajayan. V.D is the Managing Director of Wave Integrated Business L.L.C Group. He had started the business with chairman Mr. Badar Suweilem Ali Al Kasbi. He had given his full attention to making the group today an established-organized-corporate along with many divisions to support the market for its own requirement. From the day first onwards, he is being felt with its overall growth and entering new business areas. His Visionary leadership and immense supports are very vital to reach today level.

He provides oversight in the operational matters of all business units for Wave Integrated Business L.L.C., he is responsible for setting and implementing the strategic direction of the entire organization. He provides leadership and direction for Wave Integrated business L.L.C group while maintaining and reinforcing the corporate culture.

With many years of professional experience, a proven track record and history of success, Mr. Sajayan V.D. has learned what it takes for businesses to succeed. Through these qualities, he is able to guide clients in dealing with complex projects and realizing their strategic visions. Mr.Sajayan V.D, with his rich education and work experience helps Wave Integrated business LLC to great heights.



MS. NAMEETA - DIRECTOR-INTERNATIONAL OPERATIONS

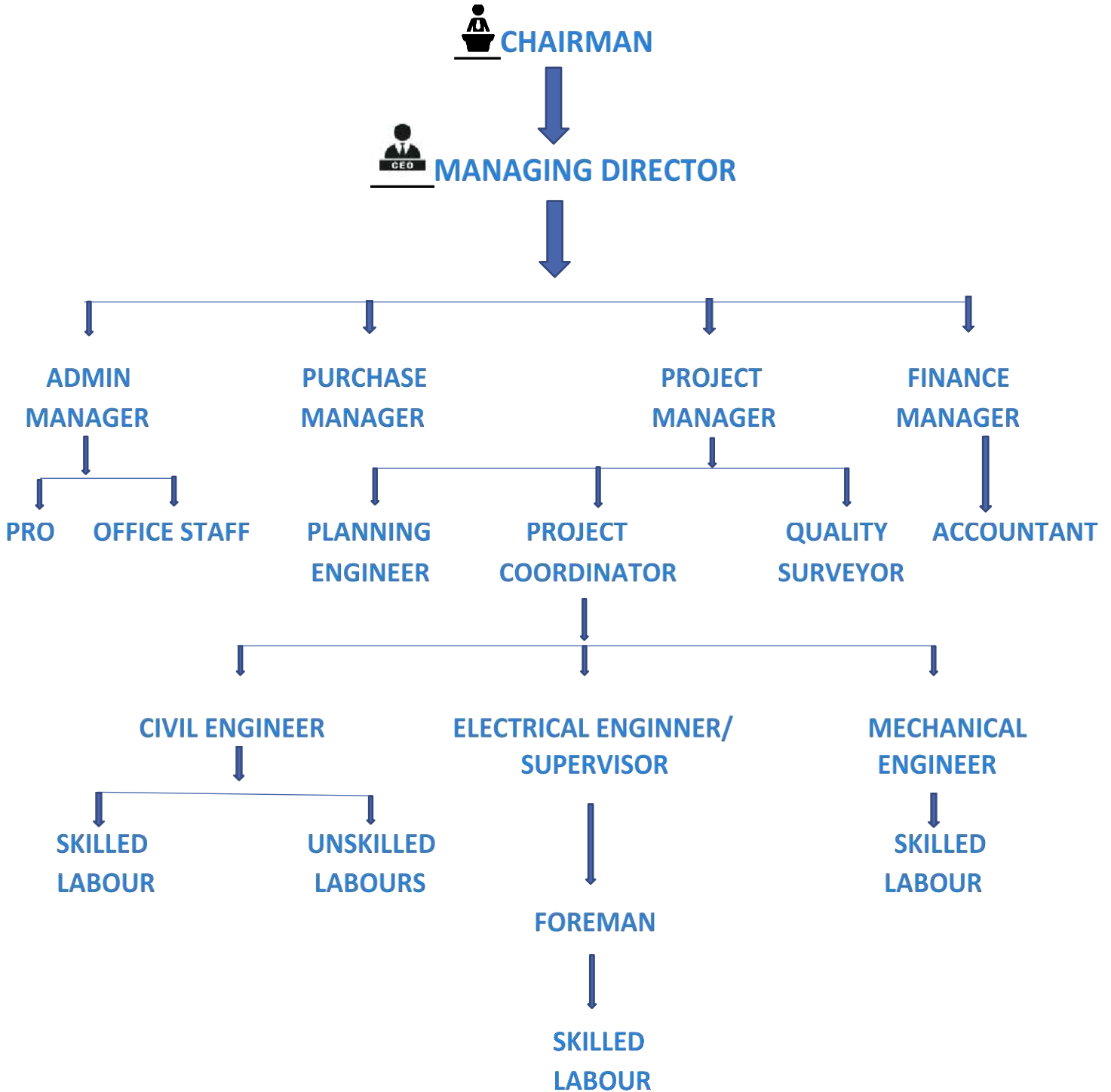
Ms. Nameeta is having rich experience in the same field, joined Al Manawir as Director of International Operations, to oversee the management of Contracting Division of the Company. She has strong experience in project management of various types of projects with regard to planning, procurement, cost control and execution within the budget and time schedule by leading a team of multidisciplinary engineers and varied experience of working structure.

KEY PERSONAL STAFF



- MR. SYAM KUMAR (B.E. ELECTRICAL ENGINEER)
- MR. MANJESH GOWDA S.S. (B.E. CIVIL ENGINEER)
- MR. PRAJWAL (B.E. CIVIL ENGINEER)
- MR. NASSER HAMAD BAKHIT AL RUBI (PUBLIC RELATION CLERK)
- MRS. SAFIYA MUBARK SALIM AL SINANI (PERSONAL AFFAIRS CLERK)
- MR. AJITH (B.E. CIVIL ENGINEER)
- MR. AKHILNATH (ACCOUNTANT)MBA
- MS. JINISI MATHAES (ACCOUNTANT)BCOM
- MR. SAFAD (B.E. CIVIL ENGINEER)
- MS. SAPTHA (M.TECH. STRUCTUAL ENGINEER)
- MS. SRUTHI (B.E. CIVIL ENGINEER)
- MS. SHARANYA (M.TECH. STRUCTUAL ENGINEER))
- MS. NEENA SIBY (BE. CIVIL ENGINEER)
- MS. JEYARAM (BE. CIVIL ENGINEER)
- MS. SULTHAN SIRAJUDEEN (BE. CIVIL ENGINEER)
- MS. AHAMMAD AL AAMRI

ORGANIZATION CHART



BUSINESS ACTIVITIES OF

The Company started as a strategic business unit in **Civil, Electrotechnical Plumbing** and the **Maintenance works of civil and MEP** and Sperate division for special activities Like different types of industrial/floor coating and waterproofing works.

- **Epoxy & Polyurethane Coating**
- **Anti-microbial Flooring**
- **Anti-static Flooring**
- **Sports Flooring**
- **Industrial Flooring**
- **Decorative Flooring**
- **Terrazzo Flooring**
- **Power float works with floor hardener.**
- **Stamp Concrete & Pigment**
- **Micro Topping**
- **Aseptic Painting -Medical Facility**
- **Waterproofing (Roof, Wet & Substructure)**
- **Swimming pool and Tank Coating**
- **Concrete Repair, Injection & Grouting**
- **HDPE/GRP Lining**
- **Fire Paint Works**
- **Shotcrete, Grouting & Ferro concreting Works.**
- **Trading of Special Products.**

STRENGTH

- Core team of professionals well qualified with rich experience in construction projects.
- High level of technical competence, meticulous planning and successful execution history.
- High level of automation, systems and procedures.
- Excellent infrastructure suited to undertake projects of any magnitude.

A list of major projects under execution and already executed is placed elsewhere in the document.

INFRASTRUCTURE

The company has the following infrastructure for execution of projects:

- ☐ Skilled, Semi-skilled and un-skilled labor force.
- ☐ Heavy machineries like JCB, Excavators, Compactors, Rollers, Weigh Batchers, Mixer Machines etc.,
- ☐ Vehicles including Tippers, 4-wheel drive pickups.
- ☐ Workshop for repairs and maintenance of plant & machineries and vehicles.
- ☐ Stores for major building materials
- ☐ Porta cabins for site accommodation.

LIST OF TECHNICAL PERSONAL

Sl. No.	Technical personal	Total Manpower
01	MASONS	22
02	STEEL FIXERS	15
03	SHUTTERING CARPENTERS	9
04	HELPERS	20
05	ELECTRICIANS	10
06	PLUMBERS	10
07	FITTERS	8
08	PAINTERS	10
09	RIGGERS	6
10	TECHNICIANS	12
11	WELDERS	2
12	FINISHING CARPENTERS	13
13	FOREMAN & SUPERVISORS	7
14	MECHANICS	8
15	OPERATORS	9
16	CLEANERS	8
17	COOKS	3
18	DRIVERS	4
19	STOREKEEPERS	4
20	CHARGE HAND	10

LIST OF MAJOR TOOLS & EQUIPMENTS



Sl. No.	Technical personal	Total Manpower
01	WHEEL LOADER-JCB	1
02	JCB 3CX + 4CX	4
03	JCB LOADALL (BOOM JCB)	1
04	TOWER CRANE - 5 TON	1
05	BOAB CAT SKID LOADER	2
06	FORK LIFT- KOMATSU 5 TON	1
07	TRAILOR –MAN	1
08	TIPPER 18 M3 – MAN	2
09	MAN-ROCK BODY	3
10	10 TON HIAB-FUSO	1
11	7 TON CANTER-MITSUBISHI	2
12	3 TON VEHICLE	3
13	WATER TANKER-650 GAL	1
14	MINI BUS – 15 -SEATER	1
15	LIGHT VEHICLE	8
16	PICK UP VAN	3
17	LIGHT VEHICLE - 4 WHEEL DRIVE	4
18	COMPRESSION TESTING MACHINE	1
19	DUMPER	10
20	ROLLER COMPACTOR 3.5 TON	1
21	ROLLER COMPACTOR 2 TON	6
22	PLATE COMPACTOR –DIESEL	5
23	CONCRETE MIXER MACHINE	4
24	CONCRETE WEIGH BATCHER	2
25	GENERATOR - DIESEL	2
26	GENERATOR - PORTABLE –PETROL	2
27	WELDING GENERATOR –DIESEL	1
28	SKY CLIMBER	3
29	WELDING MACHINE -ELECTRICAL	4
30	DEMOLISHING HAMMER	20
31	CONCRETE VIBRATORS	15
32	PLATFORM HOIST	5
33	AIR COMPRESSOR FOR JACK HAMMER	1
34	JACK HAMMER	4
35	AIR COMPRESSOR - 500 LTR	2
36	AIR COMPRESSOR - SMALL	6
37	AIR LESS SPRAY MACHINE	1
38	BAR BENDING MACHINE	4
39	BAR CUTTING MACHINE	2
40	WOOD CUTTING MACHINE	5
41	LATH FOR WOOD WORKS	2
42	BLOCK CUTTING MACHINE	2
43	TILE CUTTING MACHINE (STAND TYPE)	3
44	TILE CUTTING MACHINE (CERAMIC)	2
45	ROAD CUTTING MACHINE	1
46	INTERLOCK CUTTER (MANNUAL)	9
47	CABLE DETECTOR	1
48	TOTAL STATION	2
49	THIDOLITE	2

50	AUTO LEVEL	2
51	LEVEL B-20	1
52	POWER TROWELL	9
53	MARBLE GRINDING MACHINE	4
54	MOPPING MACHINE	2
55	THREADING MACHINE -ELECTRICAL	7
56	THREADING MACHINE CUM GROOVING MACHINE	3
57	GROOVING MACHINE	1
58	DRILLING MACHINE	14
59	ANNULAR CUTTER	3
60	HYDRAULIC CRIMPING TOOL	2
61	CHAIN SAW CUTTER FOR WOOD	1
62	BLOWER	6
63	DISC CUTTER 14"	3
64	ANGLE GRINDER 9"	15
65	ANGLE GRINDER 7"	8
66	ANGLE GRINDER 4"	12
67	JIG SAW CUTTER	10
68	SCREW GUN	8
69	ELECTRODE TREATMENT OVEN	14
70	POWER WASHER	2
71	HYDRO TEST PUMP- 3 PHASE	1
72	HYDRO TEST PUMP- SINGLE PHASE	5
73	BENCH DRILLING MACHINE	3
74	BENCH GRINDER	3
75	GAS CUTTER	12
76	WALKIE TALKIE	10
77	WALL CHASER WITH VACUM CLEANER	6
78	WATER PUMP -ELECTRICAL	8
79	WATER PUMP -PETROL	2
80	SCRABLING MACHINE	4
81	HOLIDAY TESTER	2
82	MASTER LEVEL	2
83	CABLE LIFTING JACK	16
84	BENCH VICE	16
85	ARGON CYLINDER	4
86	BEVEL CUTTER	11
87	CHAIN BLOCK	1
88	COMBILISER -LASER	4
89	STEEL CONTAINER- 40'	1
90	PPM MICROMETER (SOKKIA-SL NO:12289)	2
91	PIPE BENDING MACHINE (HYDRAULIC)	2



WATERPROOFING WORKS LIST

- **Structural Waterproofing**
- **Swimming Pool Coating**
- **Tank Coating Works**
- **GRP Lining**

SOME WATERPROOFING WORKS COMPLETED

SUB STRUCTURE WATER PROOFING, ROOF AND OTHER TYPERS OF WATERPROOFING

Sl. No.	Name of Project	Location	Client/ Contractor
1	Sub structure waterproofing works – STS for EES	Rusail	Haya Contractor – The Arabian Contracting Company
2	Sub structure waterproofing works - RGF Site	Sohar port	Sohar port / Majis Oman & Contractor – MS Thoshiba water solution LLC
3	Sub structure waterproofing works – Barka power plant substation	Barka	ONIEC
4	Oman insecticides and Air freshener	sohar	Oman fastners sohar
5	Duqum Refinery	Duqum	Drydock Oman
6	Water distribution network for Wilayat Bidiyah	Bidiyah	Towell Engineering Group
7	Sub structure waterproofing works - Desalination plant	Sur	Veolia
8	Sub structure waterproofing works – Al Bathina Coastal Road Phase One	Barka to Al Bathina	MOTC / CCC
9	Sub Structure waterproofing – Safa Training center	Ibri	OXY
10	Sub Structure waterproofing -Al Jazira steel	Sohar	Zindal steel
11	Sub Structure waterproofing -Logistical hub @ freezone	Sohar Freezone	Sohar port
12	Sub Structure waterproofing – UPS building	Wadi Latham	OXY
13	Sub Structure waterproofing – Air port PC12		BEC
14	Sub Structure waterproofing -Flour mill	Sohar	Flour mill
15	Sub Structure waterproofing -Central Bank building	Sohar	Adhi oman
16	Sub Structure waterproofing – Safa Control Center	Ibri	OXY
17	Sub Structure waterproofing – Sohar sub station	Sohar	BEC
18	Sohar Camp Project Thaalib	Sohar	MOD
19	Sub Structure waterproofing - Diar Ras Al Hadd	Ras Al Hadd	Qatari Diar Ras Al Hadd Development Company
20	Sub Structure waterproofing -Avenues Mall	Bowsher	Lulu Group International
21	Sub Structure waterproofing - Alloy mill	Sohar Industrial area	Alloy mill Contractor- Al hajiry
22	Roof & Sub structure waterproofing works - RGO Head Quarters	Seeb	RGO
23	Roof & Sub structure waterproofing works - Rimal 2	Bowsher	Al Khonji Real Estate LLC
24	Roof & Sub structure waterproofing works - Development of Fisheries HarbourProject	Diba	Ministry of Agriculture, Fisheries & Water Resources
25	Roof & Sub structure waterproofing works Central Bank of Oman	Salalah, Sohar	CBO
26	Roof & Sub structure waterproofing works RAFO Salalah	Salalah	RAFO
27	Roof & Sub structure waterproofing works Liyaqat Complex	Al Mouj	Line & Vision
28	Roof & Sub structure waterproofing works Ruwi Hotel	Ruwi	Al Badi Real Estate

29	Roof & Sub structure waterproofing works Oman Post	Seeb	Line & Vision
30	Roof & Sub structure waterproofing works - @ CBO	Salalah	CBO
31	Roof & Sub structure waterproofing works - at RGO	Mabella	RGO
32	Doom waterproofing	Ibra	Private Mosque
33	Roof & Sub structure waterproofing works	Ibri	OXY
34	Wet waterproofing in Tulip Inn hotel	Ruwi	Tulip Inn Hotel
35	Roof & Sub structure waterproofing works	Sur	Al Jaber
36	Roof & Sub structure waterproofing works- Mussanna		

Other various wet, tank. Swimming pool coating works

Location: various, client: Various

SOME SUBSTRUCTURE WATERPROOFING WORKS PHOTOGRAPHS



Self-Adhesive membrane work- STS for EES @ Rusayl



Self-Adhesive membrane work- STS for EES @ Rusayl



Sub Structure waterproofing – Safa Training center

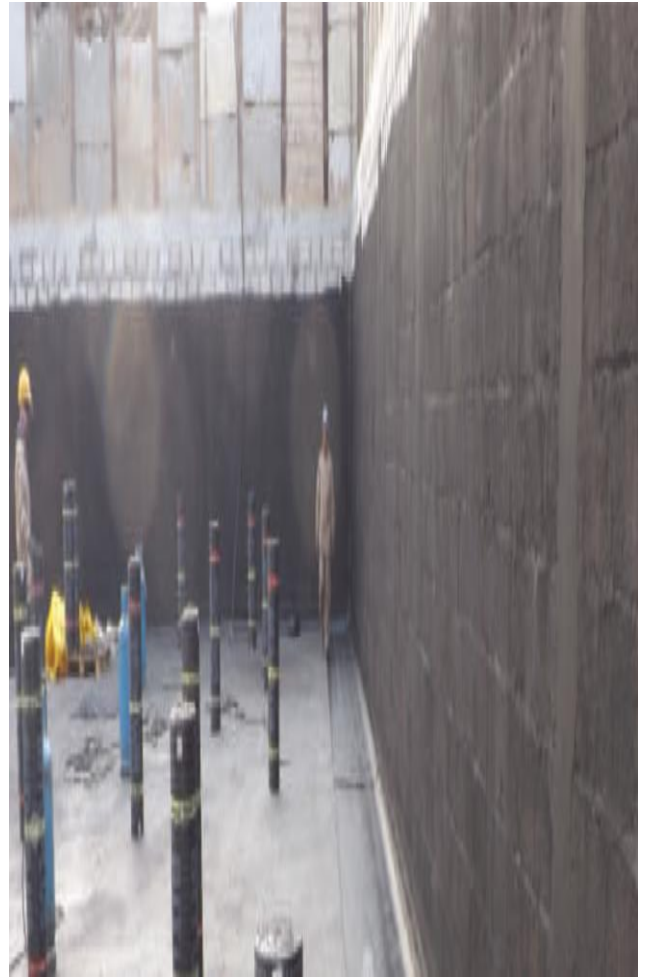




Self-Adhesive membrane work @ RGF Water Tank
Thoshiba Site – Sohar



Self-Adhesive membrane work @ RGF Water Tank Thoshiba Site –
Sohar



Rima Water Treatment Plant

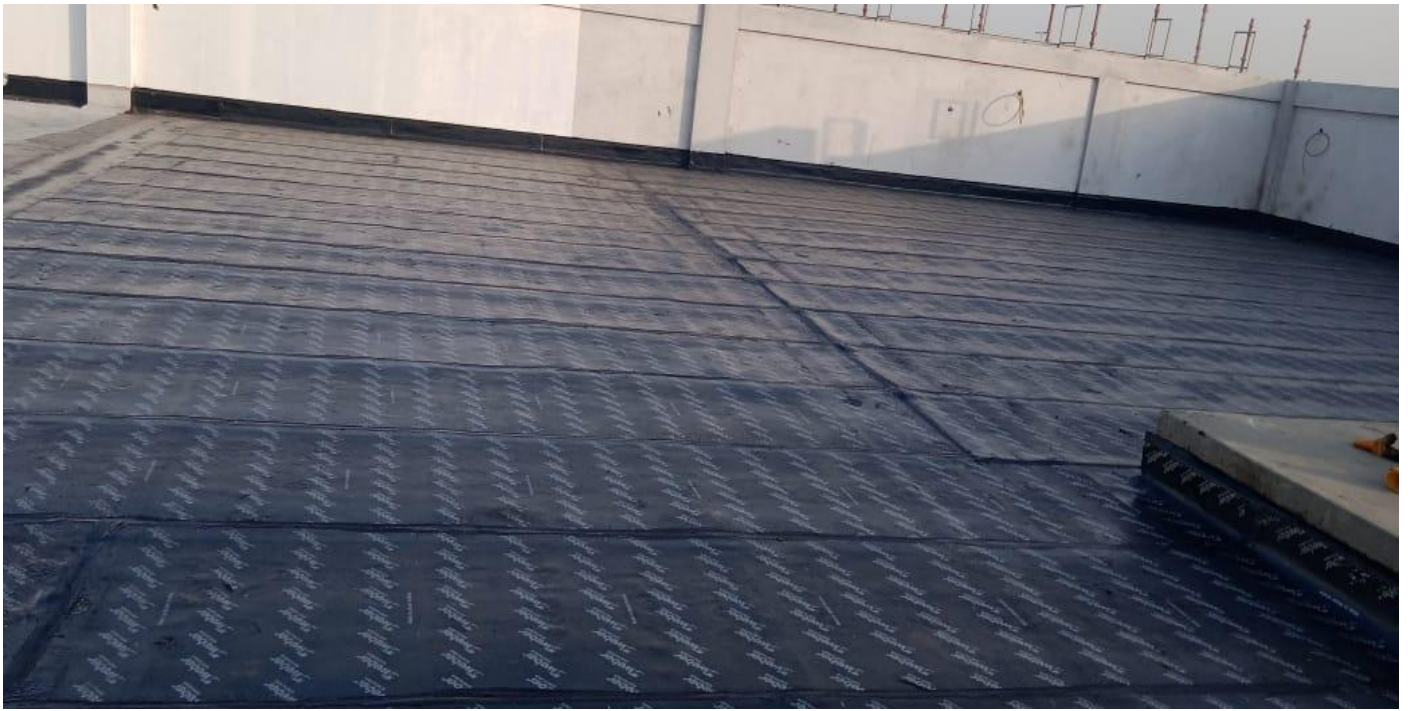


CBO @ Salalah



OXY Site @ Wadilatham





SOME ROOF WATERPROOFING WORKS PHOTOGRAPHS



DOMES WATERPROOFING – IBRA



ROOF WATERPROOFING MOD – SOHAR



SUBSTRUCTURE WATERPROOFING CHEDI HOTEL RAS AL HADD – SUR



ROOF WATERPROOFING



ROOF WATERPROOFING



ROOF WATERPROOFING

SOME SWIMMING POOL COATING WORKS COMPLETED

Sl. No.	Name of Project	Location	Client/ Contractor
1	Bhawan Complex	Amarat	Bhawan
2	Commercial Complex	Duqum	
3	Dharamcey Complex	Qurum	Dharamcey
4	Complex	Al Buraimi	Nadhan Engineering
5	Complex	Mabella	Private
6	Hotel	Salalah	Liwatia

SOME TANK COATING WORKS COMPLETED

Sl. No.	Name of Project	Location	Client/ Contractor
1	Sewage tank at Haya	Al Khoud	Haya
2	Water tank coating at Ghala	Ghala	Adhi Oman
3	Complex complex water tank	Al Khoud	Dharamcey
4	Water tank at CBO	Salalah	CBO
5	Sewage tank at commercial complex	Al Qurum	Private
6	Sewage water tank	Ibri	

SOME SWIMMING POOL WORKS PHOTOGRAPH



BHAWAN COMPLEX – AMARAT



COMMERTIAL COMPLEX – DUQUM



DHARMACEY COMPLEX – QURUM



COMPLEX – MABELLA

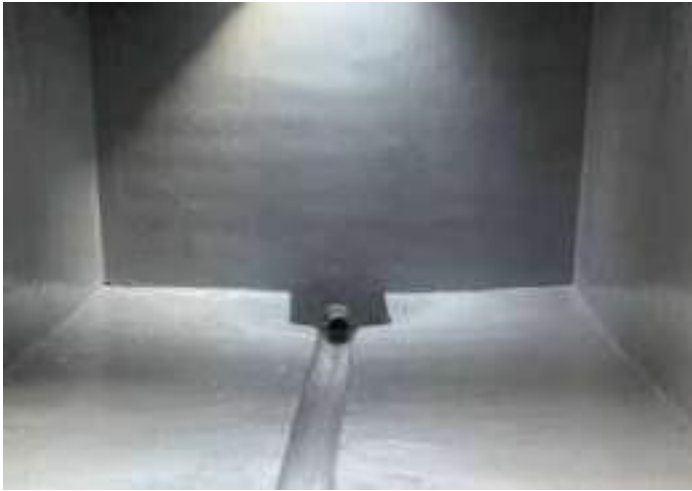


HOTEL – SALALAH



COMPLEX – BURAIMI

SOME TANK COATING WORKS PHOTOGRAPH



HAYA SEWAGE TANK – AL KHOUD



WATER TANK - GHALA



COMMERTIAL COMPLEX TANK – AL KHOUD



CBO WATER TANK – SALALAH



AL KHOUD COMPLEX SEWAGE TANK



SEWAGE TANK – IBRI

GRP LINING PROJECTS COMPLETED

Sl. No.	Name of the Project	Location	Client/Main Cont.
1.	Old Airport Tank Coating	Muscat	Al Nada Al Omania
2.	Jindal Steel Works	Sohar	JSW
3.	Sur Desalination Plant	Sur	Violia
4.	Sohar Water treatment Plant	Sohar	Nama

SOME OF THE GRP LINING WORKS PHOTOGRAPHS



THANK YOU



WHERE



To find us

1ST FLOOR, OFFICE NO: 102

ALFARDAN GHALA, MUSCAT

SULTANATE OF OMAN

+968 24501399, +968 24524728

civil@waveintegrated.com

info@waveintegrated.com

